

Pacific Grove Museum of Natural
History Director's Report February 2022

Guests & Event Attendance		February 2022			
Museum Visitation	General Attendance	1,728			
	Science Saturday	254	In County		486
	Museum Events*	36	Out of County		619
	Group Visits	0	Undeclared		
	Free First Friday	42			

		February 2022			
Permanent Exhibitions	<ul style="list-style-type: none"> Contract complete with Blue Rhino for installation of Nature Exchange exhibit, opening in March and Wonder exhibit opening summer 2022. Designs for Native Plant Garden and Children's Garden in planning with Dan Vallentyne and Cooper Scallon for Spring 2022. 				
Special Exhibitions	<ul style="list-style-type: none"> Contract signed for 1882 exhibit (4/15-5/5, 2022) w Chinese Hist. Society loan 				
Education		February 2022			
Field Trips (included in Gen Attendance)	Groups: 13	Virtual: 5	Onsite: 7	8 groups in Sanctuary	
	Students: 275	118	157		
Other Group Visits				Attendees	
	0				0
	Total: 0				
Science Saturday	254				
Event Tabling	Event: n/a		Visitors:		
Group Outreach Programs/Kits	# of Schools	Students	# Program/Kit		
	0	0	0		
Museum Events/ Facility Rentals/ Private Events Guests	Lectures* 0				
	HNH* n/a				
	Business Member Meetings* 36				
	Private Events & Receptions* 0				
Jr Naturalists	21				
LIMPETS	# of Schools	Grade Level	# of Students		
	3	11-12	215		
	Adult workshop		9		
Watershed Guardian Program	# of Schools	Grade Level	# of Students		
	5	7,8,10	658		
Marketing & Promotions		February 2022			
Web, Media Social Media	<ul style="list-style-type: none"> Website Visits: 14K visits with 23K page views For amazing Monarch press, check https://www.pgmuseum.org/newsroom 		Instagram- 2,807 Facebook-9,393 Twitter-1,983	Tumblr: 1,164 LinkedIn: 43	

Organizational Updates

February 2022

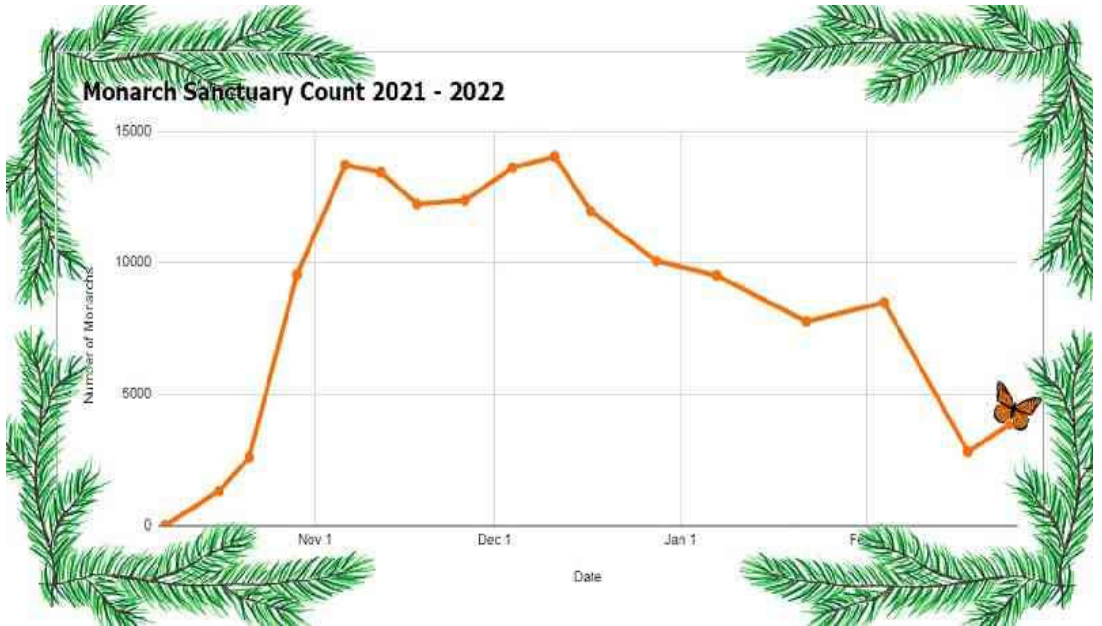
Monarch Sanctuary
Count as of 2/28:
3,858

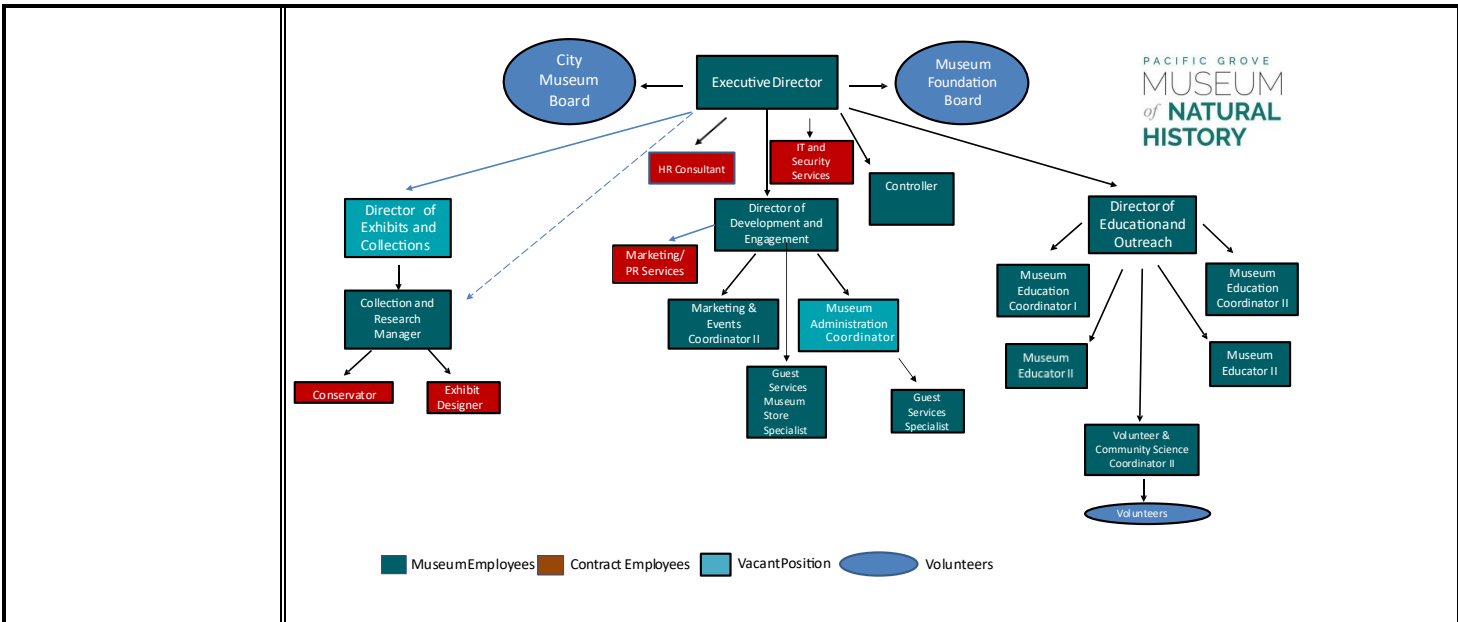
Open positions as
of 2/28/22 :0

The Museum is delighted to welcome our new Museum Marketing & Events Coordinator, Noelle Fletcher and our new Museum Administration Coordinator Hanna Quinnell beginning in March. Denise Gomes will stay with the Museum as our Guest Services Specialist, also effective in March and we thank her for serving as our interim Admin!

We are honored to add Board member Alan Arvin to the Museum Foundation Board and welcome two new City Museum Board members, Dana Allen-Greil and Donna Foote.

Carla Bitter, Executive Director was appointed as a Board member for CAM (California Association of Museums) for a 3 year term.





Current Org Chart for PG Museum circa Feb 2022

Volunteers	February 2022		
Volunteers	Active Volunteers: 35 Monarch Docents: 16	Combined Vol Hours 262.5 Monarch docents) 114.25	<i>Please see graphs and media links For monarch counts and coverage</i>
	TOTAL: 35		
Volunteer Trainings	67.5 hours accrued by 24 volunteers		

Collections	February 2022
Management	Continued rotating inventory: a. 128 items assessed, photographed and inventoried. b. No items added to catalog Rehoused items in appropriate archival conditions where necessary.
Conservation	Maya Sosa continues work on collection and exhibit file reorganization. Ongoing monitoring and integration of new Conserv system continues

Membership	February 2022
Active Memberships	748
Business Members	5